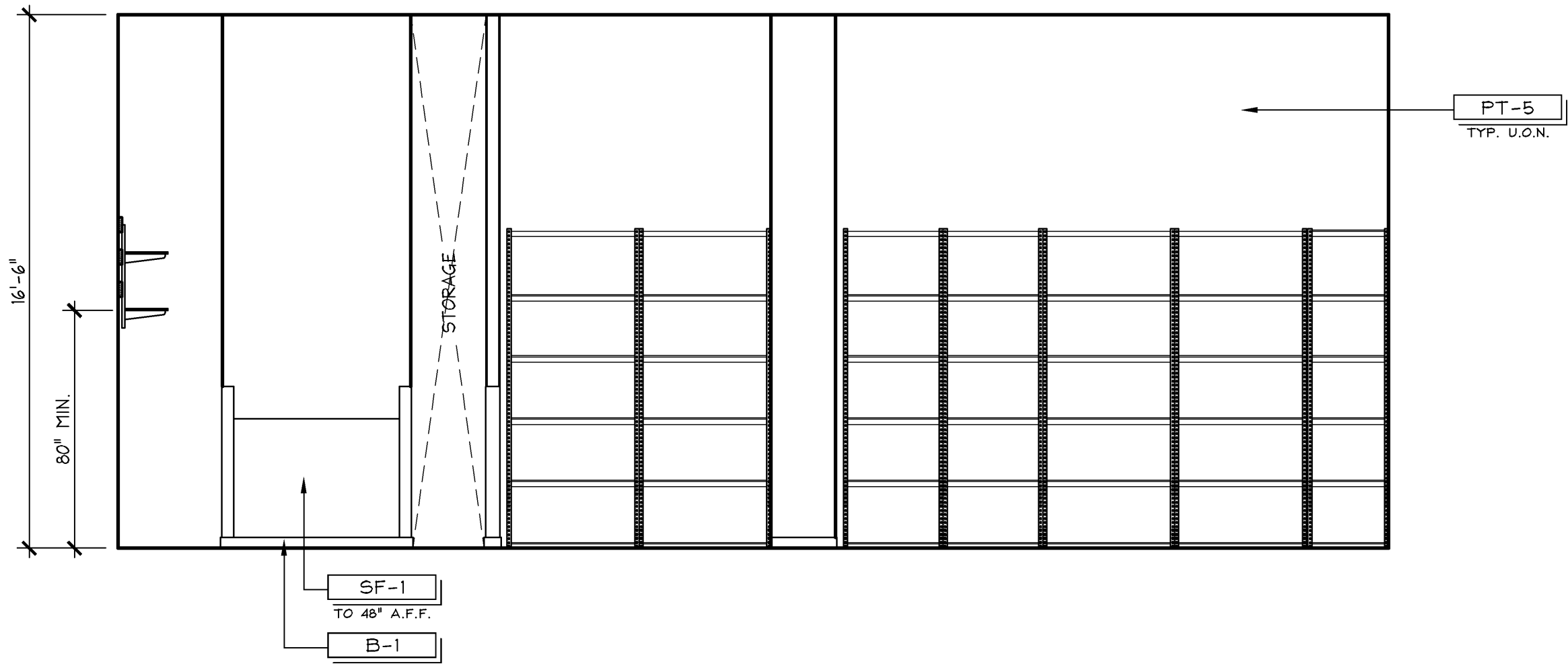


NON-SALES ELEVATION

1/4" = 1'-0"

M

10.14.11

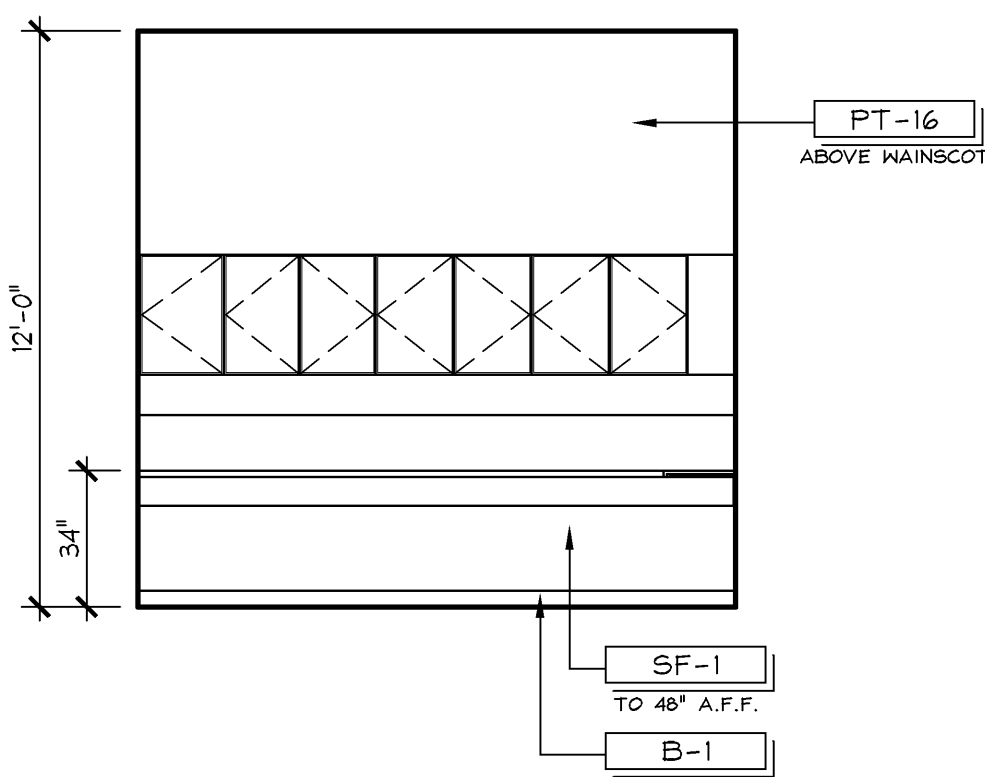


NON-SALES ELEVATION

1/4" = 1'-0"

D

10.14.11

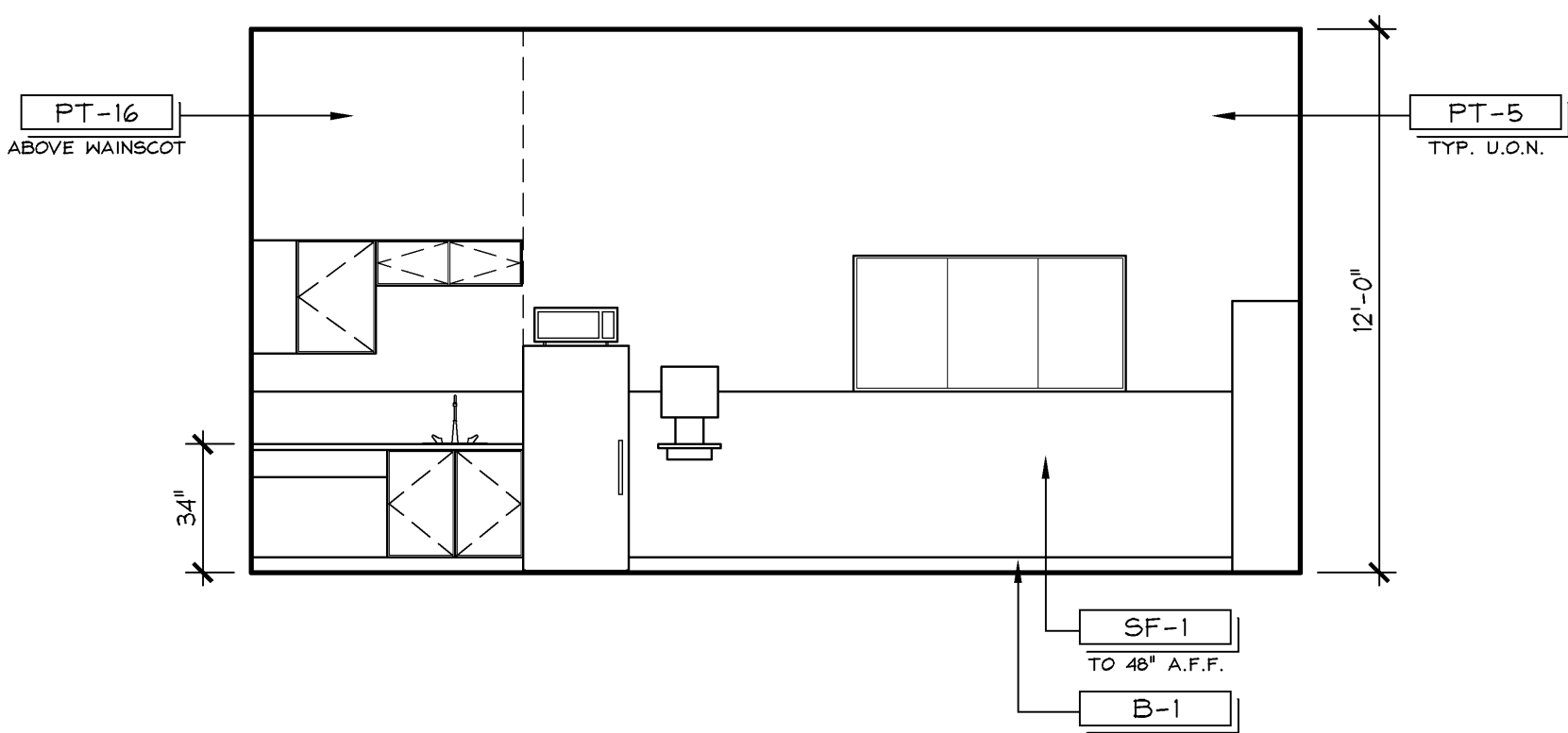


NON-SALES ELEVATION

1/4" = 1'-0"

R

10.14.11

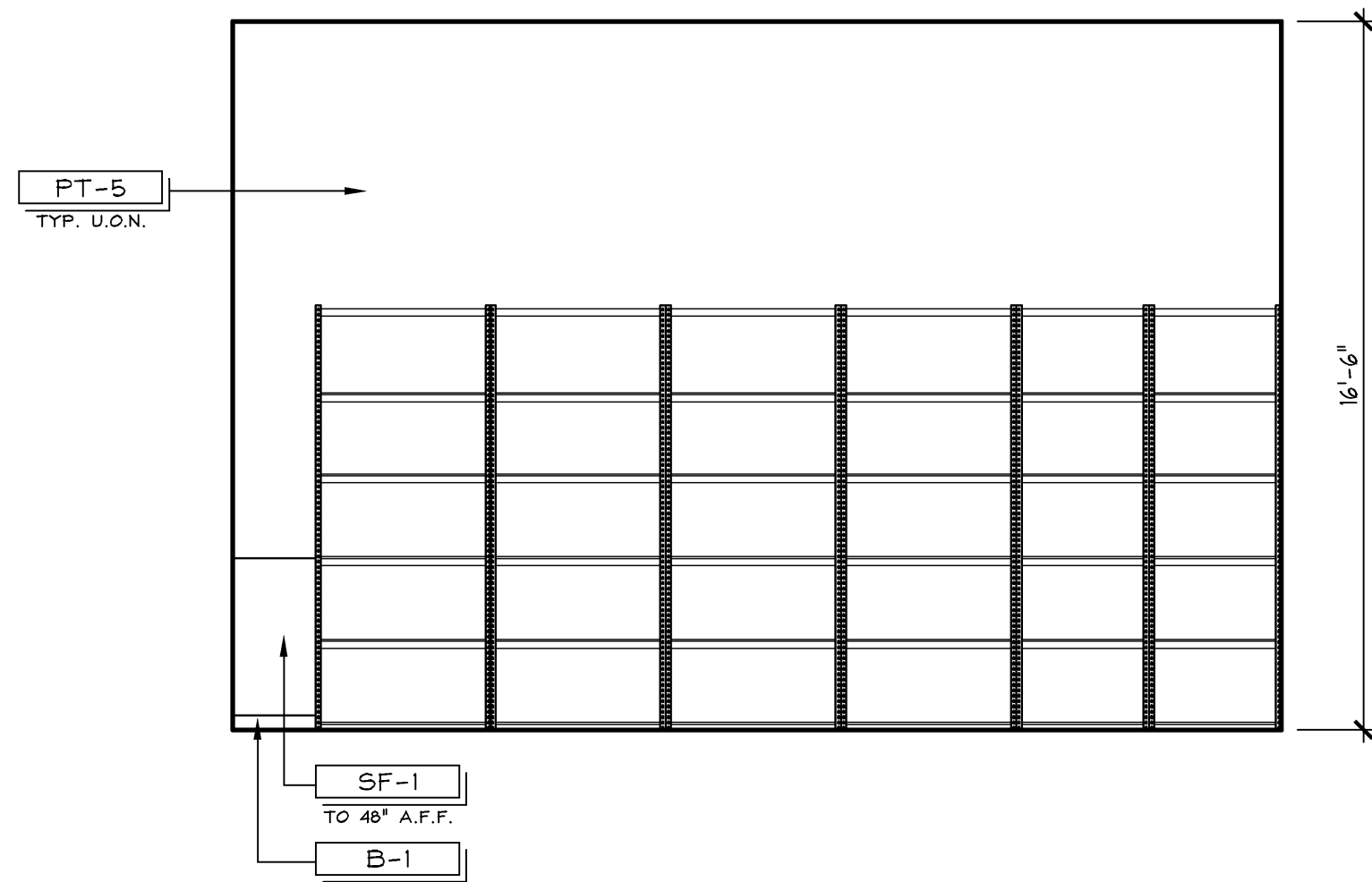


NON-SALES ELEVATION

1/4" = 1'-0"

L

10.14.11

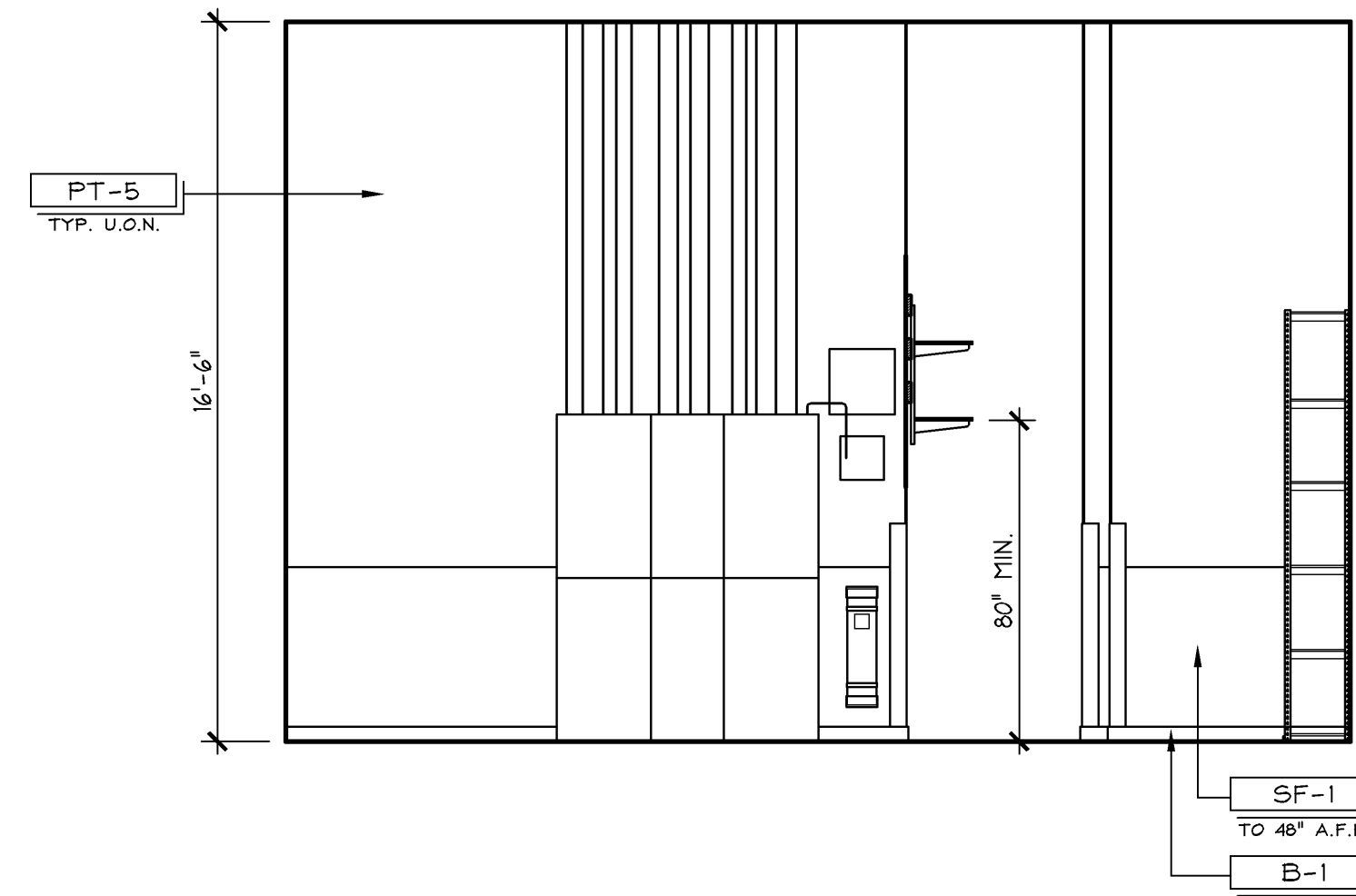


NON-SALES ELEVATION

1/4" = 1'-0"

G

10.14.11

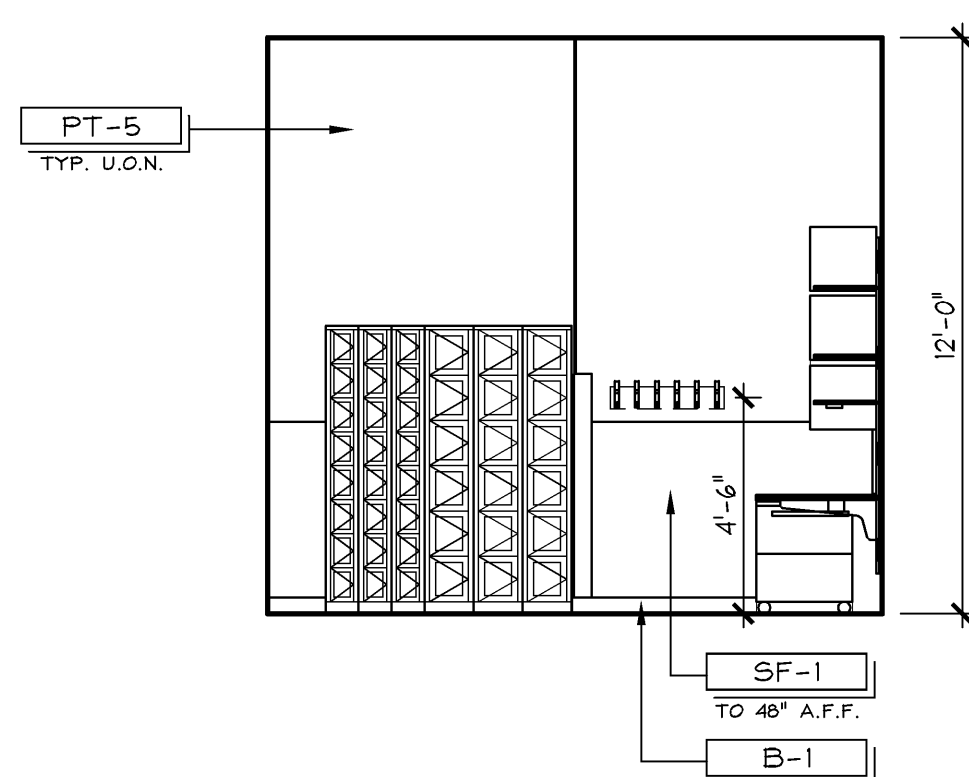


NON-SALES ELEVATION

1/4" = 1'-0"

C

10.14.11

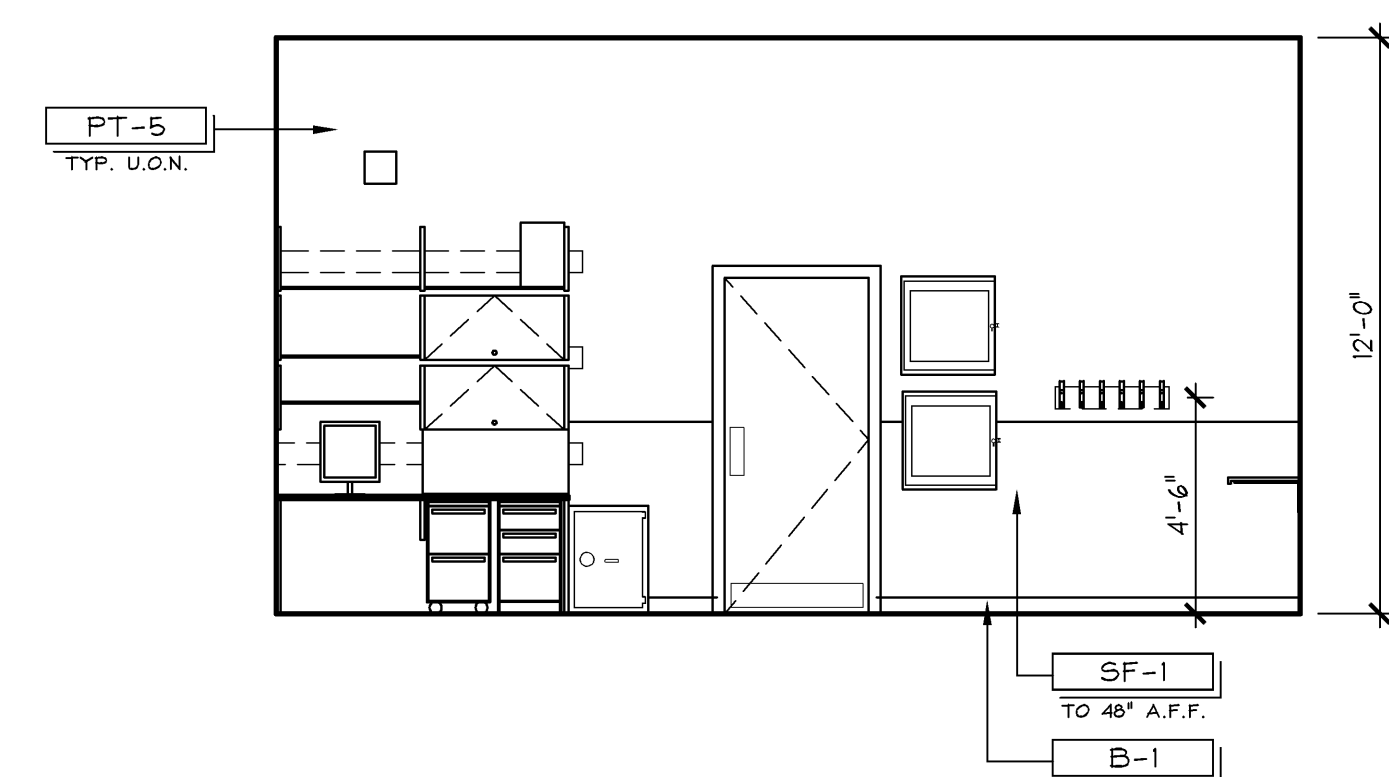


NON-SALES ELEVATION

1/4" = 1'-0"

P

10.14.11



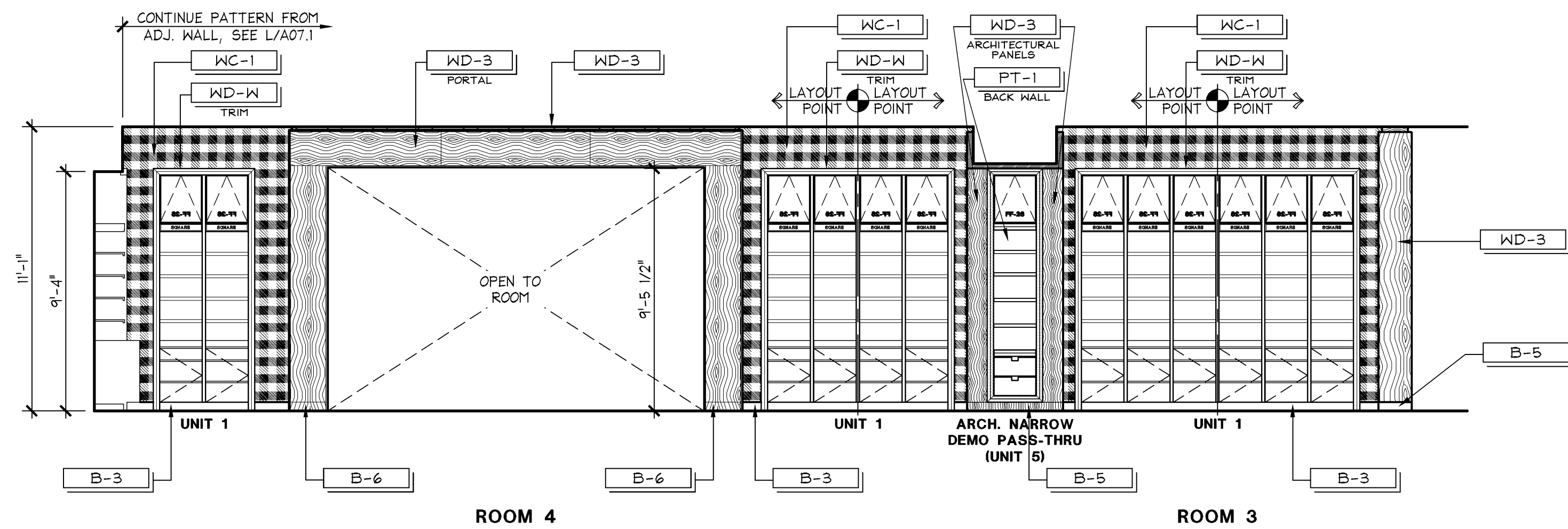
NON-SALES ELEVATION

1/4" = 1'-0"

K

10.14.11

GENERAL NOTE: ALL TRIM FINISHES TO BE PT-1 U.O.N.

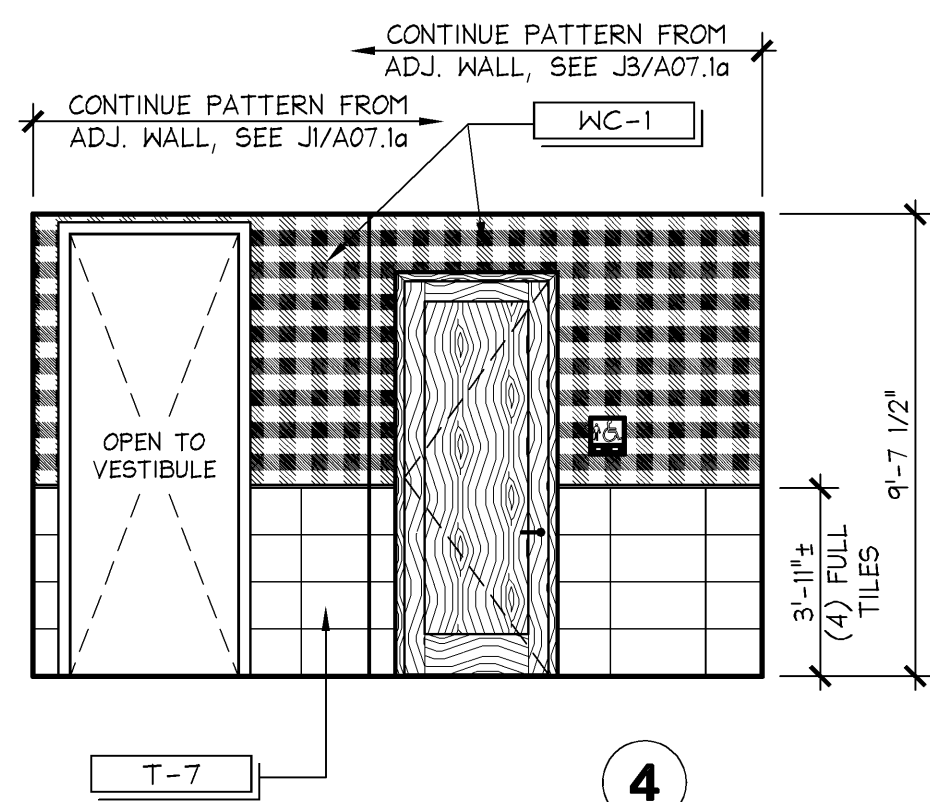


INTERIOR ELEVATION

1/4" = 1'-0"

B

10.14.11

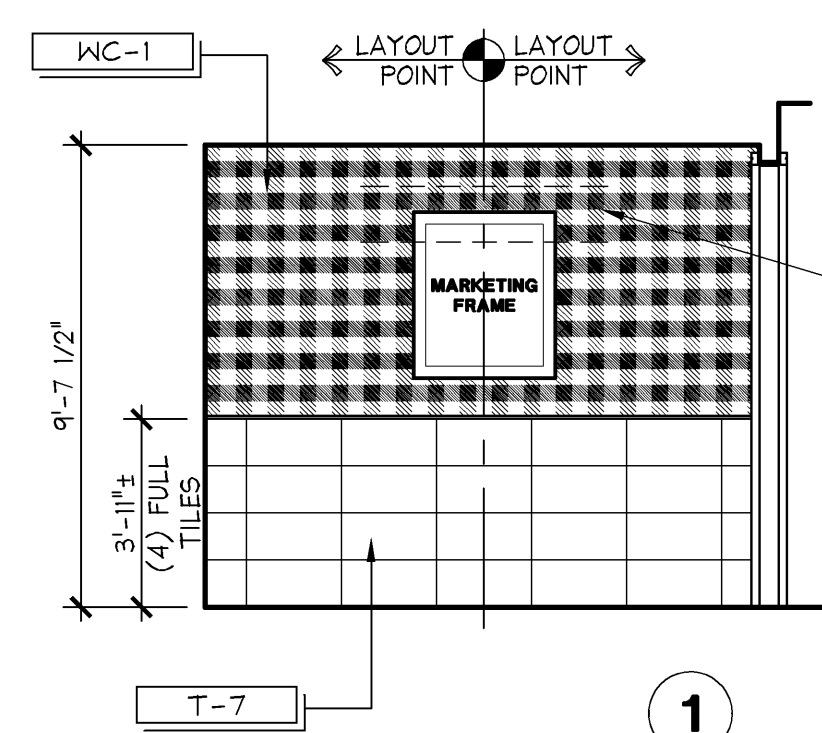
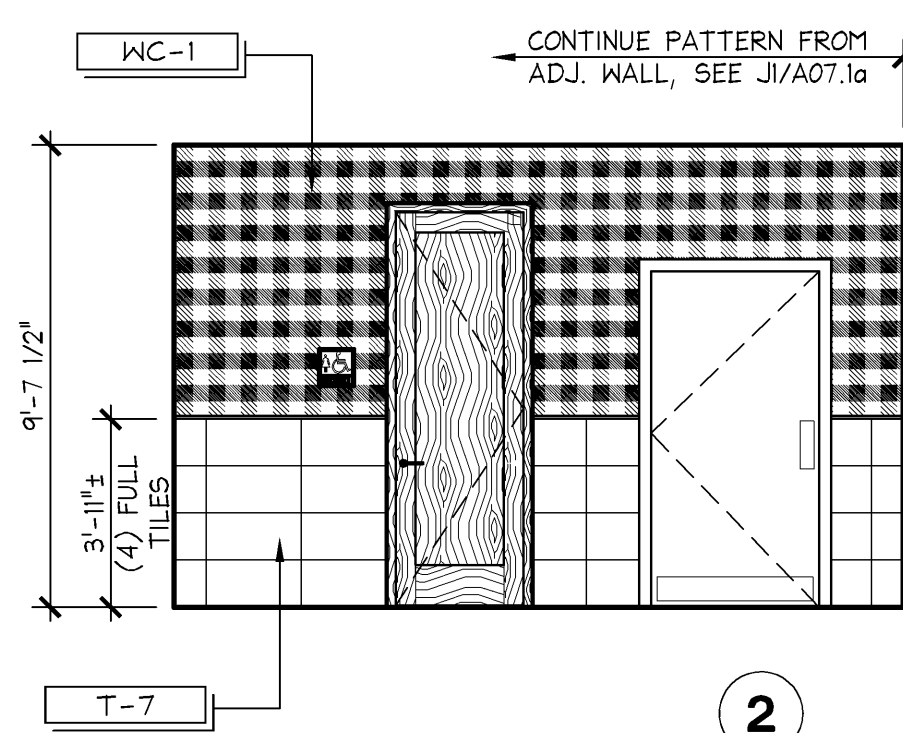
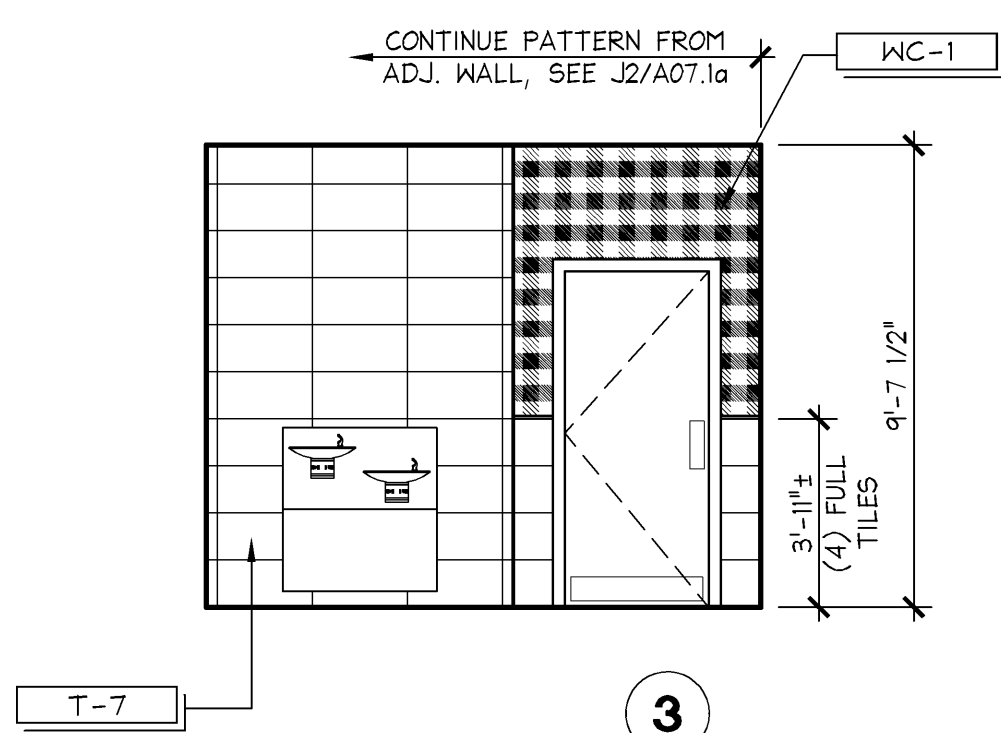


TOILET ROOM VESTIBULE ELEVATION

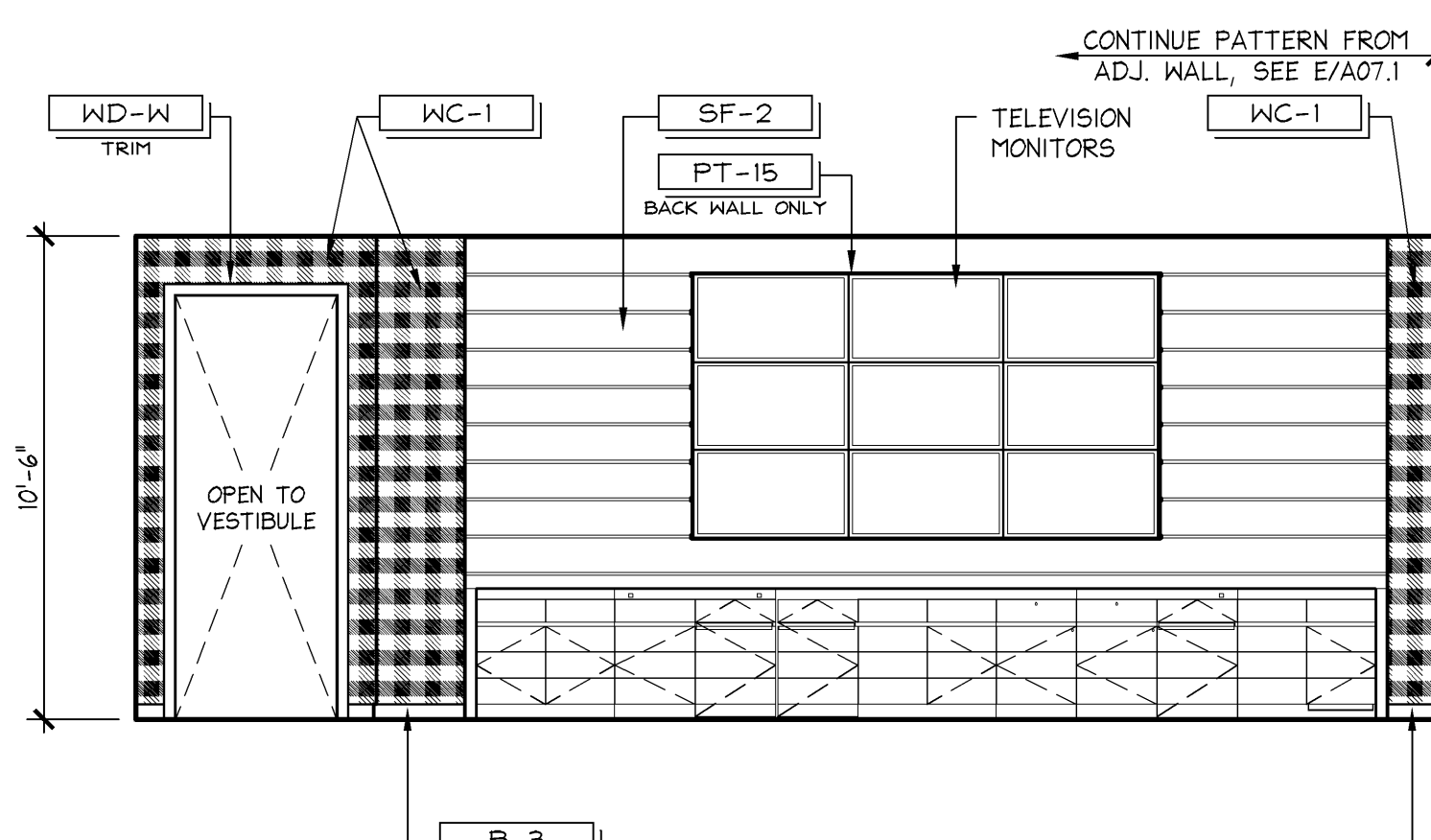
1/4" = 1'-0"

J

10.14.11



GENERAL NOTE: ALL TRIM FINISHES TO BE PT-1 U.O.N.



INTERIOR ELEVATION

1/4" = 1'-0"

A

10.14.11